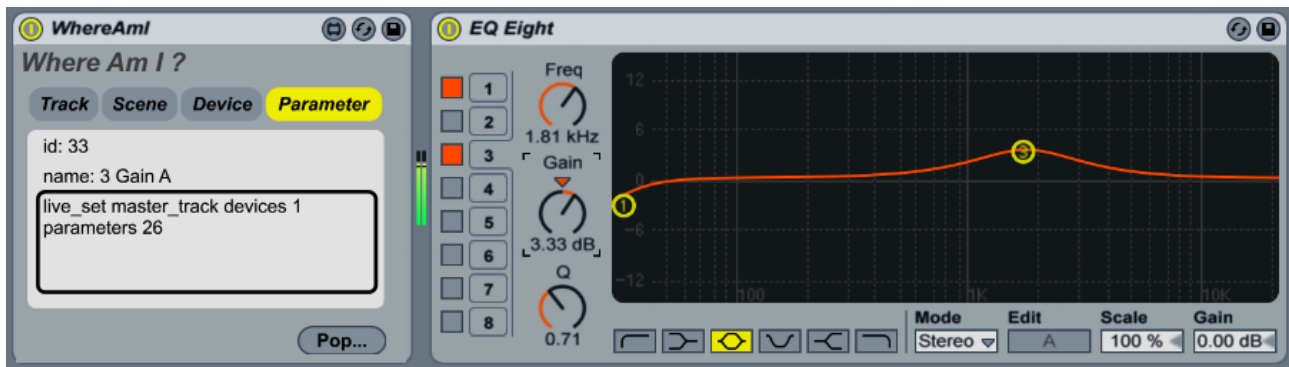


Where Am I?



Where Am I is a Max For Live utility device that helps you identify elements of the Ableton Live interface. The device observes several key properties of the Live API, giving a realtime view of one of the following:

- the currently selected track
- the currently selected scene
- the currently selected device
- the currently selected parameter

Where Am I can be used when creating your own Max For Live devices; specifically it enables you to quickly determine a 'hook' (i.e. an id or a path) for a given element that you may wish to interact with via Max For Live and the Live API.

In Use

Where Am I is a Max Audio Effect, and hence can be placed on any track in your Live set. Typically only a single instance of the device is needed in a Live set - placing it on the master track ensures it is always available when needed.

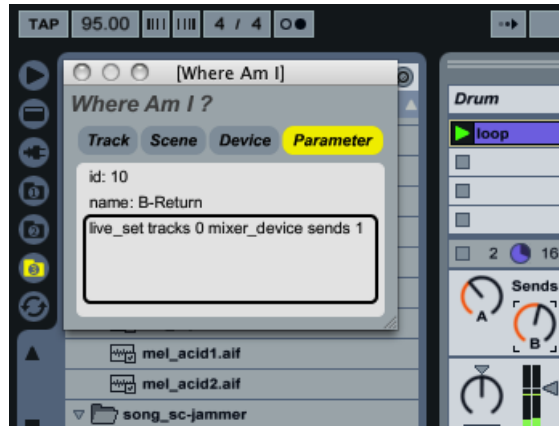
Where Am I observes four key properties of the Live API. The device employs a tabbed interface for choosing which of the properties to observe. For the element pointed to by the selected property, the following Live API information is displayed:

- the element id
- the name of the element
- the canonical path to the element

For convenience, the path to the current element is displayed in a “textedit” object – this allows you to copy and paste the displayed path directly into a Max For Live patch during editing.

Floater

Clicking the 'Pop' button in Where Am I produces a floating window containing the device's interface. This floating window will continue to show you information about selected Live elements, even when you are working on a track other than the one containing the Where Am I device.



Installation

To install the Where Am I Max For Live device, follow the steps outlined at:

http://www.ableton.com/pages/faq/max_for_live#faq_8_link

Contact

WhereAmI by Will Crossland.

Comments/queries to software@chippanfire.com

Documentation dated 17th April 2012